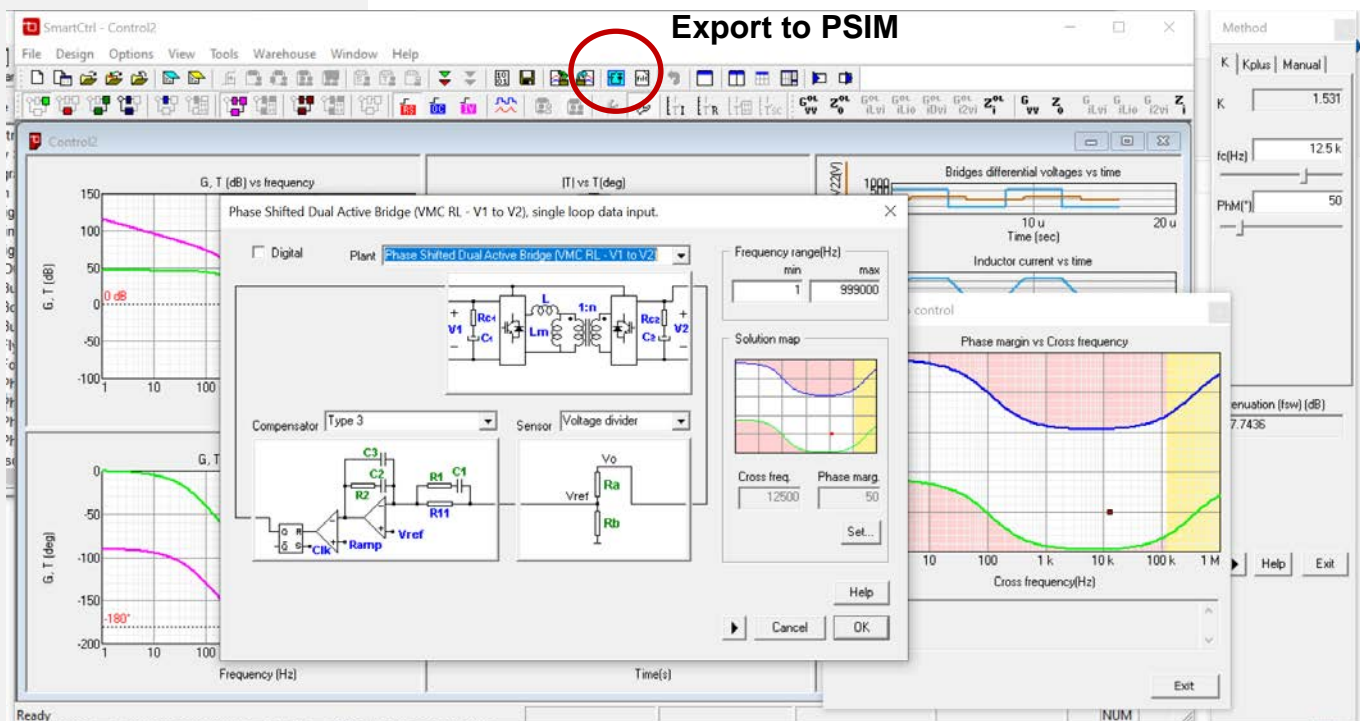


### DAB templates for PSIM

New DAB topologies are available in SmartCtrl 5.0 , while waiting for the next PSIM release (current PSIM version: v2021b does not yet include the SmartCtrl 5.0 DAB templates), it is necessary to include certain templates in the PSIM folders in order to correctly export the SmartCtrl control design to PSIM.



Please download the zip file available in SmartCtrl website link: [DAB PSIM templates for SmartCtrl 5.0](#) and just copy the files in the following folders (find below an example for PSIM 2021b) following the same structure:

X:\Powersim\PSIM\_2021b\_Softkey\SmartCtrl

X:\Powersim\PSIM\_2021b\_Softkey\SmartCtrl\Modulators

X:\Powersim\PSIM\_2021b\_Softkey\SmartCtrl\Power Stages\DC\_DC

Contact us in case of questions: [support@powersmartcontrol.com](mailto:support@powersmartcontrol.com)